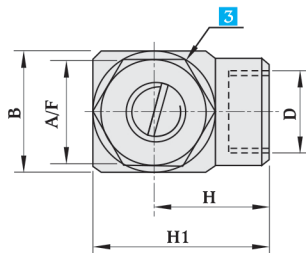
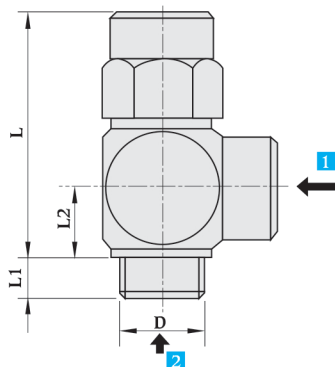




## Flow Control Valves - Swivel

### Basic Dimensions



These valves influence the flow rate.

A flow control valve allows a variation of the cross-section through which the compressed air flows.

A non-return function is provided in parallel with the throttle point, which means that the compressed air is restricted only in one of the possible directions of the flow of air. While installing the valves, the direction of the non-return function should be observed, normally metering out. These space-saving valves are mounted directly into the cylinder port or valve housing without accessories. They can be turned through 360°

- 1 Non-return direction (Free-flow)
- 2 Flow control direction (Adjustable flow)
- 3 Can be turned through 360°

All dimensions in mm unless otherwise specified

Type	B	D BSP	H1	H	L	L1	L2	A/F	Tightening torque Nm
SFCV 1/8"	16	1/8"	23.5	15.5	33.0	5.5	9.0	14	5
SFCV 1/4"	19	1/4"	30.0	20.5	44.0	8.0	11.5	16	16
SFCV 3/8"	25	3/8"	36.5	24.0	50.5	9.5	14.5	22	25
SFCV 1/2"	32	1/2"	53.0	37.0	64.0	12.0	18.0	27	70

Specifications	SFCV 1/8"	SFCV 1/4"	SFCV 3/8"	SFCV 1/2"
Medium	Compressed air, filtered (lubricated or unlubricated)			
Design	Swivel flow control valve with one way adjustment			
Mounting	Screw in thread			
Connection	1/8" BSP	1/4" BSP	3/8" BSP	1/2" BSP
Connection type 1	Female thread			
Connection type 2	Male thread			
Standard nominal flow rate in flow control direction Ltr./Min.	0 to 135 l/min.	0 to 330 l/min.	0 to 620 l/min.	0 to 1170 l/min.
Pressure range	0.1 to 10 bar	0.1 to 10 bar	0.1 to 10 bar	0.3 to 10 bar
Temperature range	-10°C to 60°C			
Materials	Housing - Aluminium, Seals - Nitrile, Curtain screw - Brass			

All dimensions in mm unless otherwise specified

Note : Subject to change without prior notice

